

Flush-mounted Compression Latch L28/L37 with H-Dimension Adjustment Stainless Steel

7-087



Advantages

- Flush-mounted version.
- Indication of opened/closed position on the housing edge and the insert.
- IP69 to DIN EN 60529.
- Vibration-proof.
- RH and LH version.
- The H-dimension can be varied via the cranking of the cam.
- The cam can be varied to ± 14 mm (GL28) and ± 9 mm (GL37) via provided H-dimension adjustment on the threaded square rod.

Material

- **Housing, knurled wheel, insert, axis, nut and anti-rotation device:** AISI 316
- **Catch:** AISI 301
- **O-ring:** NBR

Remarks

(S) Door-thickness max. 13mm at GL 28mm

(S) Door-thickness max. 22mm at GL 37mm

(S) Door-thickness min. 1.8mm

Negatively bent cams cannot be installed pre-assembled.

1. compression 6mm
2. o-ring
3. nut
4. anti-rotation device (included in scope of delivery)
5. washer when using cylinder head screws or weld studs/nuts
6. H-dimension adjustment

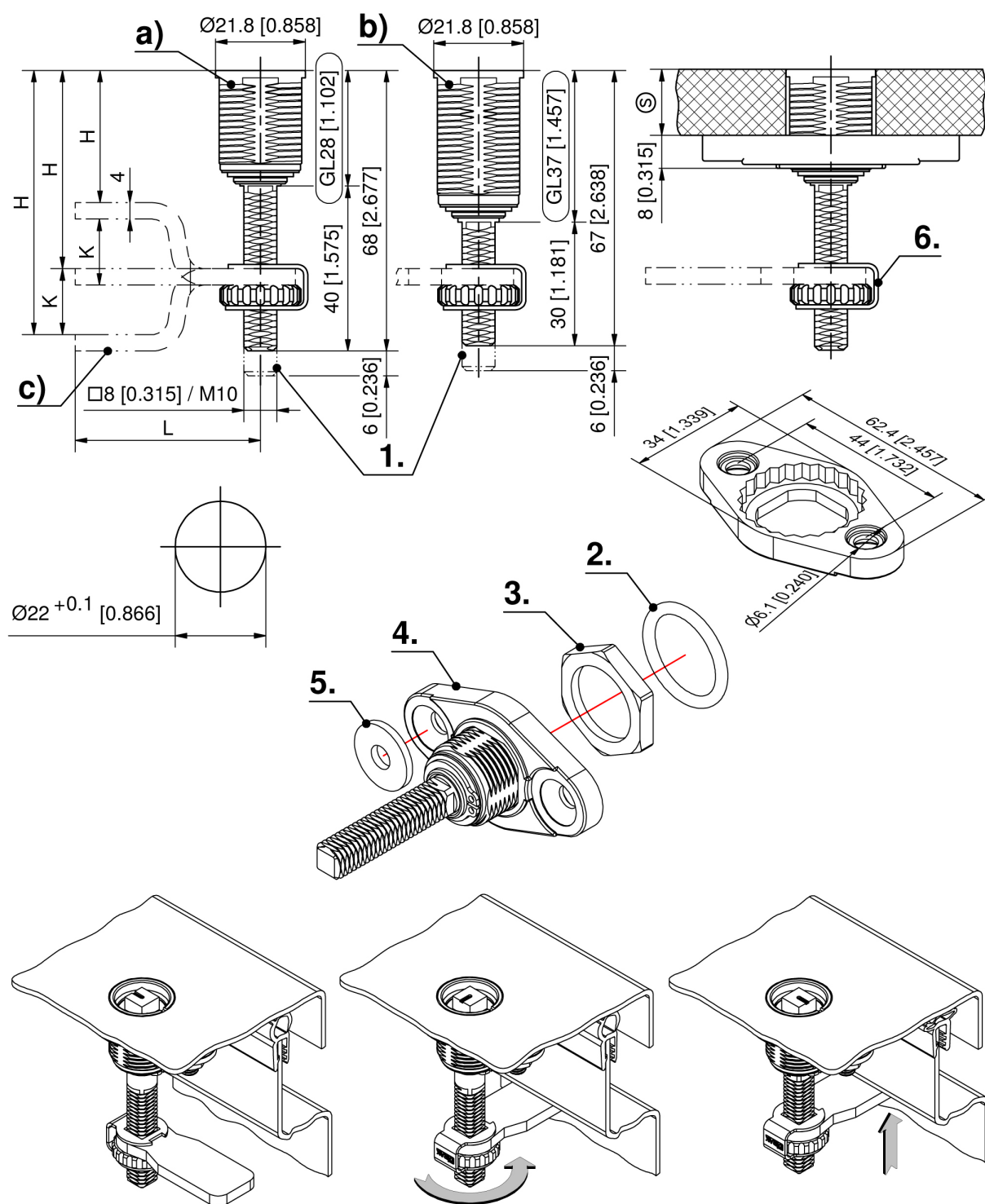
Variant where the cam can be variably adjusted with nuts, see website 7-087.01.

Flush-mounted Compression Latch with insert, RH version, closing left

	Product number	Insert	Housing length	Door-thickness (S)	Installation type	Delivery Unit
a)	348-9202.00-00000	Square 8mm	28 mm	0 mm - 13 mm	screw-on	1 pc.
a)	348-9203.00-00000	Double bit 3mm pin	28 mm	0 mm - 13 mm	screw-on	1 pc.
a)	348-9207.00-00000	Triangular 8mm	28 mm	0 mm - 13 mm	screw-on	1 pc.
a)	348-9208.00-00000	Conical square 9mm	28 mm	0 mm - 13 mm	screw-on	1 pc.
b)	348-9402.00-00000	Square 8mm	37 mm	0 mm - 22 mm	screw-on	1 pc.
b)	348-9403.00-00000	Double bit 3mm pin	37 mm	0 mm - 22 mm	screw-on	1 pc.
b)	348-9407.00-00000	Triangular 8mm	37 mm	0 mm - 22 mm	screw-on	1 pc.
b)	348-9408.00-00000	Conical square 9mm	37 mm	0 mm - 22 mm	screw-on	1 pc.

Flush-mounted Compression Latch with insert, LH version, closing right

	Product number	Insert	Housing length	Door-thickness (S)	Installation type	Delivery Unit
a)	348-9252.00-00000	Square 8mm	28 mm	0 mm - 13 mm	screw-on	1 pc.
a)	348-9253.00-00000	Double bit 3mm pin	28 mm	0 mm - 13 mm	screw-on	1 pc.
a)	348-9257.00-00000	Triangular 8mm	28 mm	0 mm - 13 mm	screw-on	1 pc.
a)	348-9258.00-00000	Conical square 9mm	28 mm	0 mm - 13 mm	screw-on	1 pc.
b)	348-9452.00-00000	Square 8mm	37 mm	0 mm - 22 mm	screw-on	1 pc.
b)	348-9453.00-00000	Double bit 3mm pin	37 mm	0 mm - 22 mm	screw-on	1 pc.
b)	348-9457.00-00000	Triangular 8mm	37 mm	0 mm - 22 mm	screw-on	1 pc.
b)	348-9458.00-00000	Conical square 9mm	37 mm	0 mm - 22 mm	screw-on	1 pc.



Open, unlatched position.

First 90° rotation:
by turning the insert, the cam is placed
behind the frame into the locked position.
The door cannot be opened.

A further 90° rotation will pull the already
latched cam 6 mm [0.236] towards the
frame: the seal is compressed, the door
is latched and free of play.