

Swinghandle RS PrC for Inserts

2-090.03



Advantages

- Swinghandle with liftable operating lever.
- 90° Closing rotation.
- Swinghandle can be locked with inserts (inserts must be ordered separately).
- IP65 according to DIN EN 60529 - version dish with cap.
- RH / LH application.
- Grounding by grounding nut (optional).

Material

- **Handle:** zinc die, chrome plated or black or PA, black
- **Dish and cap:** PA, black
- **Shaft:** brass
- **Bearing plate:** zinc die, untreated
- **Seals:** NBR

Remarks

(S) Door-thickness 1.5 - 2.5mm

Drawings for rod calculation (see accessories):

1. stroke 18mm
2. clearance

Inserts and their assembly must be ordered separately.

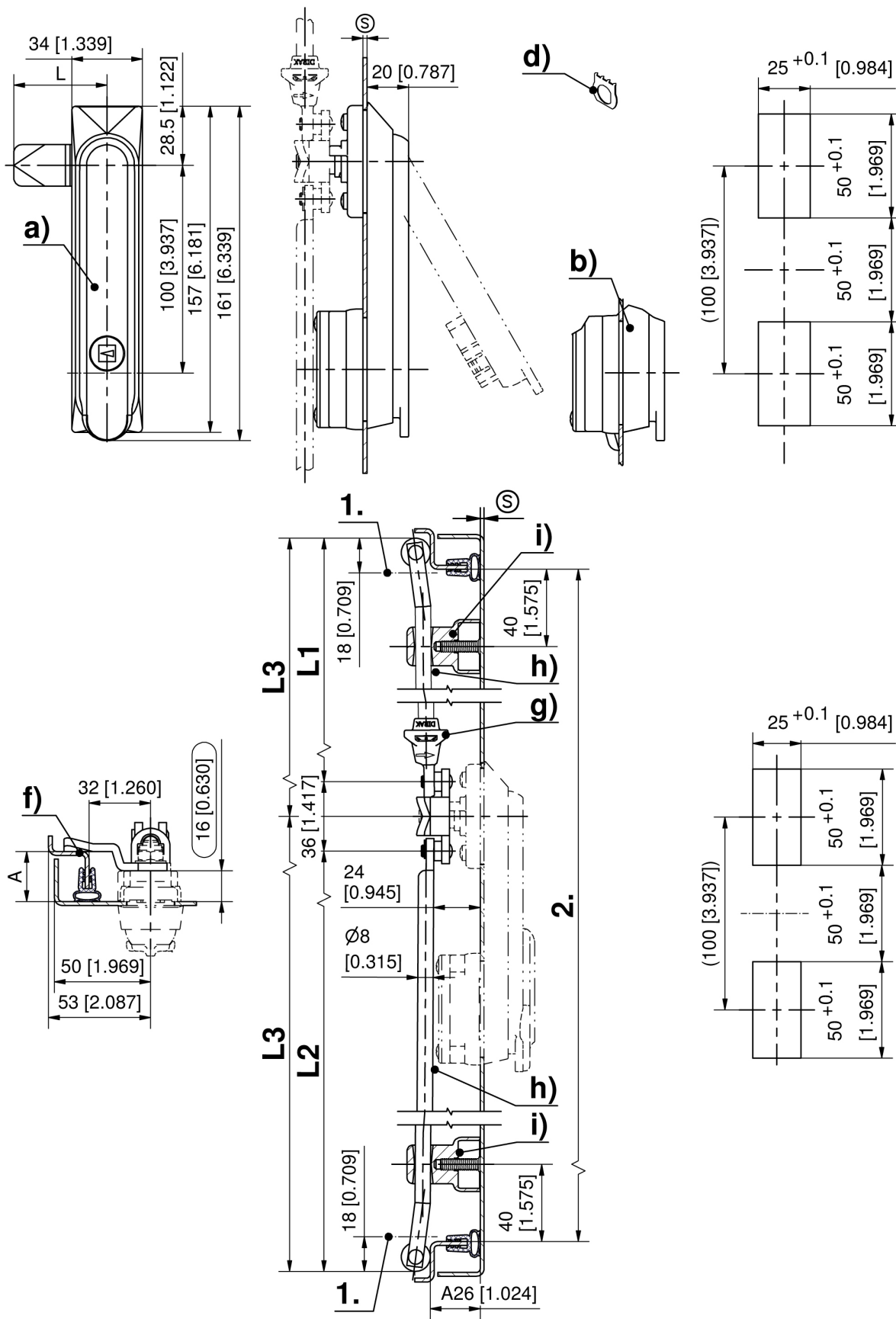
Alternative products see also 2-090, 2-090.01, 2-090.02, 2-090.04.



Swinghandle for inserts

	Product number	Handle material	Surface handle	Dish	IP protection	Installation type	Delivery Unit
a)	207-9244.00-00000	PA	black	with cap	IP65	screw-on	1 pc.
b)	107-9279.00-00000	PA	black	with hook		screw-on	1 pc.
a)	107-9205.00-00000	zinc die	chrome plated	with cap	IP65	screw-on	1 pc.

	Product number	Handle material	Surface handle	Dish	IP protection	Installation type	Delivery Unit
a)	107-9206.00-00000	zinc die	black	with cap	IP65	screw-on	1 pc.



Formula for rods with eye and rollers:
cutout in the door center (rod length varies)

$$L1 = \frac{\text{upper rod}}{2} = \frac{2 \cdot \text{clearance} - 12\text{mm}[0.472]}{2 [0.079]} - 50 \text{ mm} [1.969] \quad L2 = \frac{\text{lower rod}}{2} = \frac{2 \cdot \text{clearance} - 12\text{mm}[0.472]}{2 [0.079]} + 50 \text{ mm} [1.969]$$

cutout outside the door center (rod length equal)

$$L3 = \frac{2 \cdot \text{clearance} - 12\text{mm}[0.472]}{2[0.079]}$$