

DST Swinghandle RS PrC for Profile-Cylinder

2-090DST



Advantages

- Swinghandle with liftable operating lever.
- For profile-cylinders to DIN 18252.
- Tool-less installation.
- a) 90° for RH doors with counter-clockwise opening.
- b) 90° for LH doors with clockwise opening.
- c) 180° opening.
- The rotation stop prevents a damaging over-rotation of cam / 3-point cam.
- IP65 according to DIN EN 60529 will be achieved by cap and o-ring.

Material

- **Swinghandle, dish, cover and cap:** PA6, black
- **O-rings:** NBR Perbunan
- **Hexagon nut and washer:** steel, zinc plated
- **Shaft:** brass, untreated
- **Snap wedges:** sintered steel
- **Stop:** zinc die, untreated

Remarks

1. guide swinghandle with pre-assembled cam through upper cutout.
2. hook-in the lower part of the swinghandle and clip it in at the top.
3. press cap on.

Drawings for rod calculation (see accessories):

1. stroke 18mm
2. clearance

Profile half cylinders and their assembly must be ordered separately.



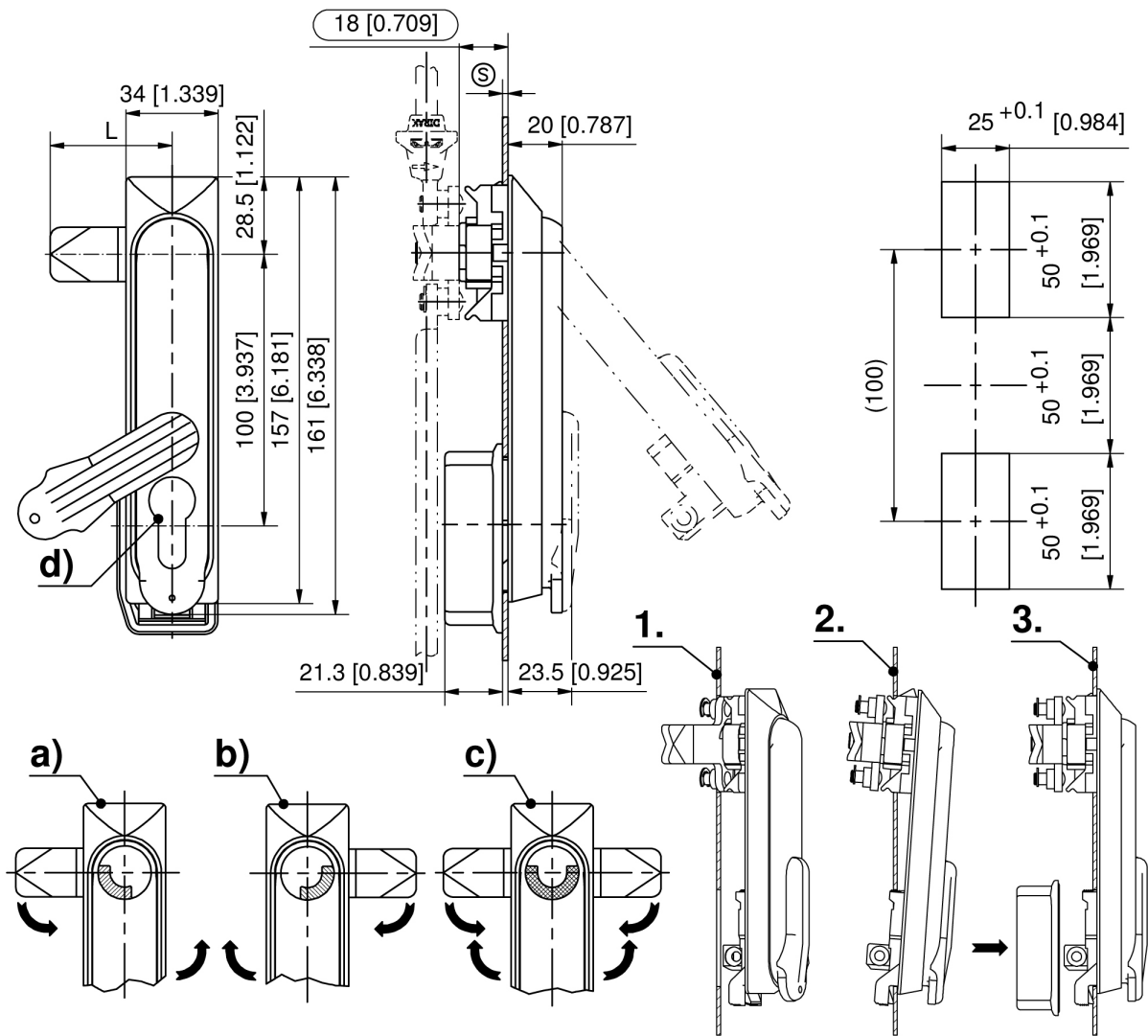
Swinghandle with dust cover, securable

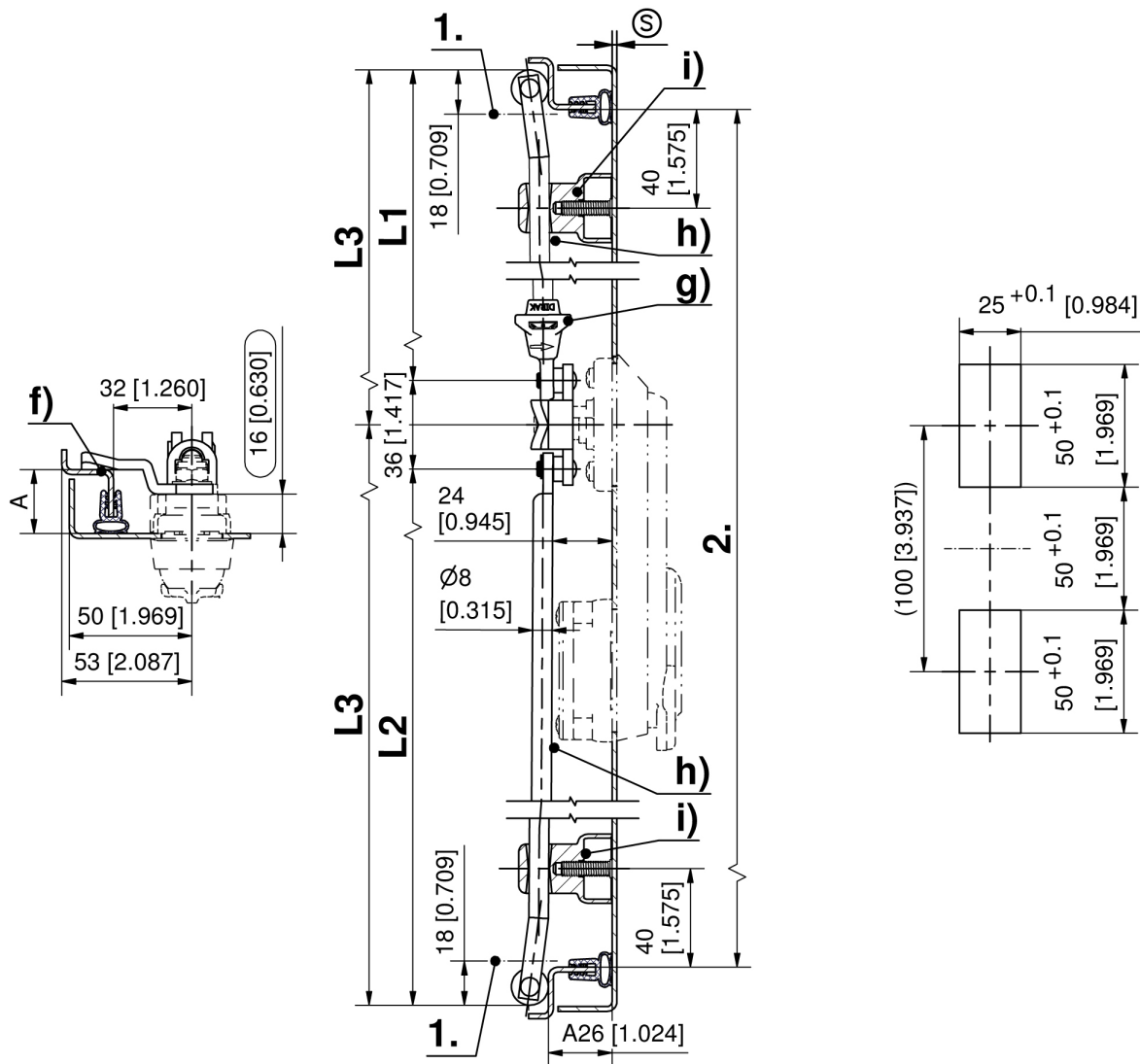
	Product number	Clamping range (S)	Stop	Installation type	Delivery Unit
a)	407-9505.00-00015	1.3 mm - 2 mm	RH, 90°	tool-less	1 pc.
a)	407-9505.00-00018	1.5 mm - 2.2 mm	RH, 90°	tool-less	1 pc.
a)	407-9505.00-00020	1.8 mm - 2.5 mm	RH, 90°	tool-less	1 pc.

	Product number	Clamping range (S)	Stop	Installation type	Delivery Unit
b)	407-9507.00-00015	1.3 mm - 2 mm	LH, 90°	tool-less	1 pc.
b)	407-9507.00-00018	1.5 mm - 2.2 mm	LH, 90°	tool-less	1 pc.
b)	407-9507.00-00020	1.8 mm - 2.5 mm	LH, 90°	tool-less	1 pc.
c)	407-9509.00-00018	1.5 mm - 2.2 mm	RH/LH, 90°	tool-less	1 pc.
c)	407-9509.00-00020	1.8 mm - 2.5 mm	RH/LH, 90°	tool-less	1 pc.
c)	407-9509.00-00015	1.3 mm - 2 mm	RH/LH, 90°	tool-less	1 pc.

Swinghandle without dust cover

	Product number	Clamping range (S)	Stop	Installation type	Delivery Unit
a)	407-9506.00-00015	1.3 mm - 2 mm	RH, 90°	tool-less	1 pc.
a)	407-9506.00-00018	1.5 mm - 2.2 mm	RH, 90°	tool-less	1 pc.
a)	407-9506.00-00020	1.8 mm - 2.5 mm	RH, 90°	tool-less	1 pc.
b)	407-9508.00-00015	1.3 mm - 2 mm	LH, 90°	tool-less	1 pc.
b)	407-9508.00-00018	1.5 mm - 2.2 mm	LH, 90°	tool-less	1 pc.
b)	407-9508.00-00020	1.8 mm - 2.5 mm	LH, 90°	tool-less	1 pc.
c)	407-9510.00-00015	1.3 mm - 2 mm	RH/LH, 90°	tool-less	1 pc.
c)	407-9510.00-00018	1.5 mm - 2.2 mm	RH/LH, 90°	tool-less	1 pc.
c)	407-9510.00-00020	1.8 mm - 2.5 mm	RH/LH, 90°	tool-less	1 pc.





Formula for rods with eye and rollers:
cutout in the door center (rod length varies)

$$L1 = \frac{\text{upper rod}}{2} = \frac{2 \cdot \text{clearance} - 12\text{mm}[0.472]}{2 [0.079]} - 50 \text{ mm} [1.969] \quad L2 = \frac{\text{lower rod}}{2} = \frac{2 \cdot \text{clearance} - 12\text{mm}[0.472]}{2 [0.079]} + 50 \text{ mm} [1.969]$$

cutout outside the door center (rod length equal)

$$L3 = \frac{2 \cdot \text{clearance} - 12\text{mm}[0.472]}{2 [0.079]}$$