

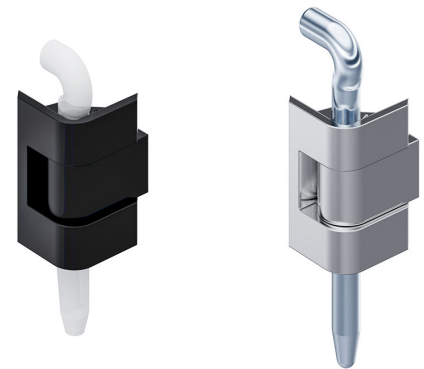
Hinge Pr05 180°

4-150



Advantages

- For surface mounted doors for single cabinets.
- Hinge partly visible.
- Door bending 20mm.
- RH / LH application.
- 180° Opening angle.
- The door-part has 2 stubs, keeping it in position during mounting of the pin.



Material

- **Frame- and door-part:** zinc die, glossy chrome plated or black
- **Pins:** steel, zinc plated, stainless steel or POM natural

Remarks

This hinge is fully interchangeable with the hinge shown on product system 4-160.

Hinge, zinc die

Product number	Surface	Door-thickness (S)	Material pin	Pin length L	Pin version	Installation type	Delivery Unit
a) 212-9001.00-00000	glossy chrome plated	1.5 mm - 2 mm	steel, zinc plated	70 mm	loose	screw-on	10 pcs.
a) 212-9002.00-00000	glossy chrome plated	1.5 mm - 2 mm	stainless steel	70 mm	loose	screw-on	10 pcs.
b) 212-9003.00-00000	glossy chrome plated	1.5 mm - 2 mm	POM	57 mm	self-locking	screw-on	10 pcs.
a) 212-9501.00-00000	glossy chrome plated	2.5 mm - 3.2 mm	steel, zinc plated	70 mm	loose	screw-on	10 pcs.
a) 212-9502.00-00000	glossy chrome plated	2.5 mm - 3.2 mm	stainless steel	70 mm	loose	screw-on	10 pcs.
b) 212-9503.00-00000	glossy chrome plated	2.5 mm - 3.2 mm	POM	57 mm	self-locking	screw-on	10 pcs.
a) 212-9004.00-00000	black	1.5 mm - 2 mm	steel, zinc plated	70 mm	loose	screw-on	10 pcs.
a) 212-9005.00-00000	black	1.5 mm - 2 mm	stainless steel	70 mm	loose	screw-on	10 pcs.
b) 212-9006.00-00000	black	1.5 mm - 2 mm	POM	57 mm	self-locking	screw-on	10 pcs.
a) 212-9504.00-00000	black	2.5 mm - 3.2 mm	steel, zinc plated	70 mm	loose	screw-on	10 pcs.
a) 212-9505.00-00000	black	2.5 mm - 3.2 mm	stainless steel	70 mm	loose	screw-on	10 pcs.
b) 212-9506.00-00000	black	2.5 mm - 3.2 mm	POM	57 mm	self-locking	screw-on	10 pcs.

