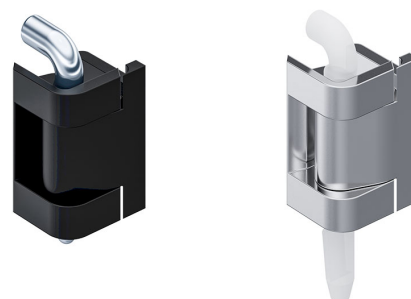


# Hinge Pr05 180°

4-152



## Advantages

- For surface mounted door for single cabinets.
- Hinge partly visible.
- Door bending 20mm.
- RH / LH application.
- 180° Opening angle.
- Frame-part in the zinc die version with M6 threaded stubs for fastening from inside.
- Frame-part made of steel for heavy applications!

## Material

- **Frame-part:** zinc die, glossy chrome plated, black or steel, black
- **Fastening washer:** steel, zinc plated
- **Door-part:** zinc die, glossy chrome plated or black
- **Pin:** steel, stainless steel or POM

## Remarks

(s) Door-thickness 1.5 - 2 mm

1. installation instruction for fastening washer
2. fastening washer

## Hinge, zinc die

	Product number	Surface	Version	Material pin	Pin length L	Pin version	Installation type	Delivery Unit
a)	212-9056.00-00000	glossy chrome plated	with M6 threaded stubs	steel, zinc plated	43 mm	loose	screw-on	10 pcs.
b)	212-9057.00-00000	glossy chrome plated	with M6 threaded stubs	stainless steel	43 mm	loose	screw-on	10 pcs.
c)	212-9058.00-00000	glossy chrome plated	with M6 threaded stubs	POM	57 mm	self-locking	screw-on	10 pcs.
a)	212-9059.00-00000	black	with M6 threaded stubs	steel, zinc plated	43 mm	loose	screw-on	10 pcs.
b)	212-9060.00-00000	black	with M6 threaded stubs	stainless steel	43 mm	loose	screw-on	10 pcs.

	Product number	Surface	Version	Material pin	Pin length L	Pin version	Installation type	Delivery Unit
c)	212-9061.00-00000	black	with M6 threaded stubs	POM	57 mm	self-locking	screw-on	10 pcs.

## Hinge, frame-part steel, door-part zinc die

	Product number	Surface	Version	Material pin	Pin length L	Pin version	Installation type	Delivery Unit
d)	212-9062.00-00000	black	with fastening washer	steel, zinc plated	43 mm	loose	screw-on	10 pcs.
e)	212-9063.00-00000	black	with fastening washer	stainless steel	43 mm	loose	screw-on	10 pcs.
f)	212-9064.00-00000	black	with fastening washer	POM	57 mm	self-locking	screw-on	10 pcs.

