

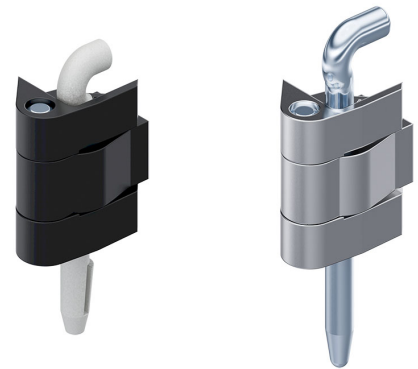
Hinge Pr05 180°

4-160



Advantages

- For surface mounted doors for adjacent cabinets.
- Hinge partly visible.
- Door bending 20mm.
- RH / LH application.
- 180° Opening angle.
- The POM pin is self-locking.



Material

- **Frame- and door-part:** zinc die, glossy chrome plated or black
- **Pivot pin:** stainless steel
- **Pin:** steel, zinc plated, stainless steel or POM, natural

Remarks

The shifted pivot point gives a larger radius.

This hinge is completely interchangeable with the hinge on product system 4-150.

Hinge, zinc die

	Product number	Door-thickness (S)	Surface	Material pin	Pin version	Installation type	Delivery Unit
a)	212-9007.00-00000	1.5 mm - 2 mm	glossy chrome plated	steel, zinc plated	loose	screw-on	10 pcs.
b)	212-9008.00-00000	1.5 mm - 2 mm	glossy chrome plated	stainless steel	loose	screw-on	10 pcs.
c)	212-9009.00-00000	1.5 mm - 2 mm	glossy chrome plated	POM	self-locking	screw-on	10 pcs.
a)	212-9507.00-00000	2.5 mm - 3.2 mm	glossy chrome plated	steel, zinc plated	loose	screw-on	10 pcs.
b)	212-9508.00-00000	2.5 mm - 3.2 mm	glossy chrome plated	stainless steel	loose	screw-on	10 pcs.
c)	212-9509.00-00000	2.5 mm - 3.2 mm	glossy chrome plated	POM	self-locking	screw-on	10 pcs.
a)	212-9010.00-00000	1.5 mm - 2 mm	black	steel, zinc plated	loose	screw-on	10 pcs.
b)	212-9011.00-00000	1.5 mm - 2 mm	black	stainless steel	loose	screw-on	10 pcs.
c)	212-9012.00-00000	1.5 mm - 2 mm	black	POM	self-locking	screw-on	10 pcs.
a)	212-9510.00-00000	2.5 mm - 3.2 mm	black	steel, zinc plated	loose	screw-on	10 pcs.

	Product number	Door-thickness (S)	Surface	Material pin	Pin version	Installation type	Delivery Unit
b)	212-9511.00-00000	2.5 mm - 3.2 mm	black	stainless steel	loose	screw-on	10 pcs.
c)	212-9512.00-00000	2.5 mm - 3.2 mm	black	POM	self-locking	screw-on	10 pcs.

