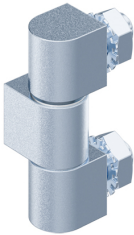


Corner Hinge Pr04 180° Tempered Steel

4-220



Advantages

- Hinge for explosion-tight doors.
- For surface mounted doors.
- Hinge visible.
- RH / LH application.
- 180° Opening angle.

Material

- **Hinge:** tempered steel, zinc plated
- **Washer:** brass, nickel plated
- **Nut and serrated washer:** steel, zinc plated
- **Pin:** steel, nickel plated

Remarks

1. washer
2. nuts M8 and serrated washers are included
3. stud bolt, nut and serrated washer M10 are **not** included

Corner hinge

Product number	Pin version	Installation type	Delivery Unit
219-9201.00-00000	loose	screw-on	10 pcs.

