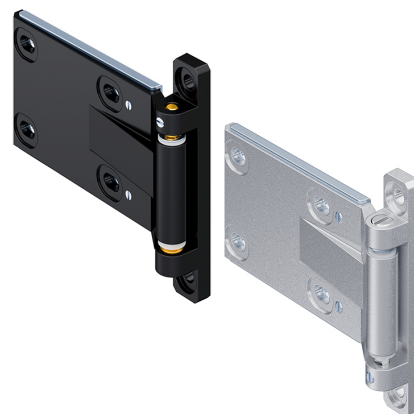


# 3D Hinge, adjustable Pr01 180°

4-350



## Advantages

- Adjustable in: height  $\pm 2\text{mm}$  (0.079) / width  $\pm 2\text{mm}$  (0.079) / depth  $\pm 2\text{mm}$  (0.079)
- For nested doors.
- Hinge visible.
- 180° Opening angle.
- RH and LH version.
- Version not assembled for RH and LH application.

## Material

- **Frame- and door-part:** zinc die, untreated or black
- **Base plate:** steel, zinc plated or black
- **Bushings:** PA, natural
- **Pin:** brass, untreated or AISI 303
- **Washers:** AISI 304

## Remarks

1. pressure screw for depth adjustment
2. locking of the adjustable brass axle
3. PA bushings
4. base plate has 4 holes  $\varnothing 4.1$  for possible additional fastening at the door leaf

## 3D hinge

Product number	Base plate	Version	Surface	Material pin	Pin version	Installation type	Delivery Unit
217-9402.00-00000	steel, zinc plated	RH version	untreated	brass	screwed	screw-on	10 pcs.
217-9403.00-00000	steel, zinc plated	LH version	untreated	brass	screwed	screw-on	10 pcs.
217-9404.00-00000	steel, zinc plated	not assembled	untreated	brass	screwed	screw-on	10 pcs.
217-9408.00-00000	steel, black	RH version	untreated	AISI 303	screwed	screw-on	10 pcs.
217-9409.00-00000	steel, black	LH version	untreated	AISI 303	screwed	screw-on	10 pcs.
217-9410.00-00000	steel, black	not assembled	untreated	AISI 303	screwed	screw-on	10 pcs.

Product number	Base plate	Version	Surface	Material pin	Pin version	Installation type	Delivery Unit
217-9405.00-00000	steel, zinc plated	RH version	black	brass	screwed	screw-on	10 pcs.
217-9406.00-00000	steel, zinc plated	LH version	black	brass	screwed	screw-on	10 pcs.
217-9407.00-00000	steel, zinc plated	not assembled	black	brass	screwed	screw-on	10 pcs.
217-9411.00-00000	steel, black	RH version	black	AISI 303	screwed	screw-on	10 pcs.
217-9412.00-00000	steel, black	LH version	black	AISI 303	screwed	screw-on	10 pcs.
217-9413.00-00000	steel, black	not assembled	black	AISI 303	screwed	screw-on	10 pcs.

