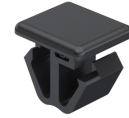


PA Fastener □9.5 and □12.7

1-020



Advantages

- To clip-in for □9.5 or □12.7 cutout or with 10mm gap, e.g. aluminum profiles.
- Audible click ensures proper secure installation.
- Seismic-proof according to GR-63-CORE, Issue 4.
- Vibration-proof according to DIN EN 61373.
- The square base 9.2 and 12.5 prevents the joiner from turning within the installation cutout.

Material

- **Fastener:** PA, black

Remarks

The (S) dimension indicates the total thickness of the sheet metal panels.

1. cutout for a) and b)
2. cutout for c) and d)
3. aluminum profile fit for a) and b)
4. groove

Fastener

	Product number	Clamping range (S)	Cutout	Dimension X	Installation type	Delivery Unit
a)	214-0109.51-00000	3 mm - 3.5 mm	9.5	12,6 mm	tool-less	250 pcs.
b)	214-0109.51-10000	4 mm - 4.5 mm	9.5	13,6 mm	tool-less	250 pcs.
c)	214-0109.51-20000	3 mm - 3.5 mm	12.7	13 mm	tool-less	250 pcs.
d)	214-0109.51-30000	4 mm - 4.5 mm	12.7	14 mm	tool-less	250 pcs.

