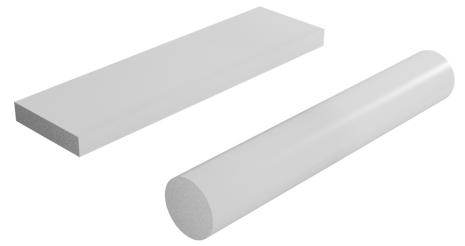


Rods for Compression Rod Latch

3-221



Advantages

- Round and flat rods suitable for rod latch with compression product system 3-211.
- Straight and cranked round rods with eye for screwing.

Material

- **Round and flat rods:** steel, zinc plated

Remarks

When using flat rods, with a length of 300mm or more, rod guides (PS 3-910/3-911) must be used.

For reasons of strength and stability, DIRAK recommends the use of round bars.

Rods for compression rod latch for clamping pieces

	Product number	Name	Rod dimension WxH	Rod diameter Ø	Delivery Unit
a)	108-0916.15-00300	Flat rod, length 300mm	14 x 3 mm		1 pc.
a)	108-0916.15-00400	Flat rod, length 400mm	14 x 3 mm		1 pc.
a)	108-0916.15-00500	Flat rod, length 500mm	14 x 3 mm		1 pc.
a)	108-0916.15-00600	Flat rod, length 600mm	14 x 3 mm		1 pc.
a)	108-0916.15-00700	Flat rod, length 700mm	14 x 3 mm		1 pc.
b)	201-0212.00-00293	Round rod, length 298mm		8 mm	1 pc.
b)	201-0212.00-00493	Round rod, length 498mm		8 mm	1 pc.
b)	201-0212.00-00593	Round rod, length 598mm		8 mm	1 pc.
b)	201-0212.00-00693	Round rod, length 698mm		8 mm	1 pc.

Round rod with 2 eyes for compression rod latch

Product number	Name	Eye	Rod diameter Ø	Delivery Unit
201-0170.15-Lxxmm	Round rod with 2 eyes for compression rod latch, straight	Ø 5.1mm	8 mm	1 pc.
201-0172.15-Lxxmm	Round rods with 2 eyes for compression rod latch, cranked	Ø 5.1mm	8 mm	1 pc.
201-0171.15-Lxxmm	Round rod with 2 eyes for compression rod latch, straight	M5	8 mm	1 pc.
201-0173.15-Lxxmm	Round rod with 2 eyes for compression rod latch, cranked	M5	8 mm	1 pc.

