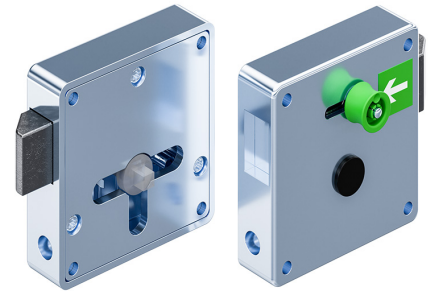


# Slam Latch for Insert, with and without Internal Unlocking

6-111.02



## Advantages

- RH / LH or vertical / horizontal application.
- Pull back of the bolt by rotation of the insert.
- Closing is possible by self-locking of the latch bolt with free stroke.
- Variant a) with internal unlocking: by pulling the handle, the latch is retracted.
- Large, ergonomically shaped handle for optimal operation.
- Use in applications according to DIN 79008.
- Indication of unlocking direction by high-quality self-adhesive foil, long afterglow coated according to DIN 67510-4.
- Variant b): without internal unlocking.

## Material

- **Slam latch:** zinc die, zinc plated
- **Latch bolt:** spheroidal graphite, cast iron
- **Internal unlocking:** PA, green

## Remarks

**Please order separately:**

insert, lock support, lock cover and serrated screw.  
Use of inserts according to product system 2-141.

Installation with 4 carriage bolts or weld-studs M5.

1. stroke
2. handle for internal unlocking

Shown is part number 229-9109.00-00001

## Slam Latch for Insert

	Product number	Variant	Version	Installation type	Delivery Unit
a)	229-9109.00-00001	with internal unlocking	RH door	screw-on	1 pc.
b)	229-9109.00-00000	without internal unlocking	RH door	screw-on	1 pc.
a)	229-9110.00-00001	with internal unlocking	LH door	screw-on	1 pc.
b)	229-9110.00-00000	without internal unlocking	LH door	screw-on	1 pc.

