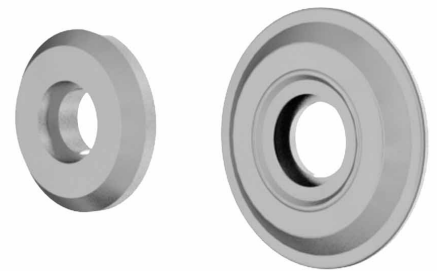


Rosettes for Heavy Duty Latches

6-280.05



Advantages

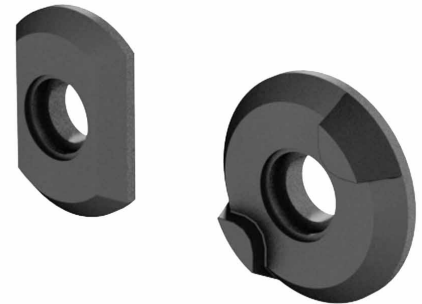
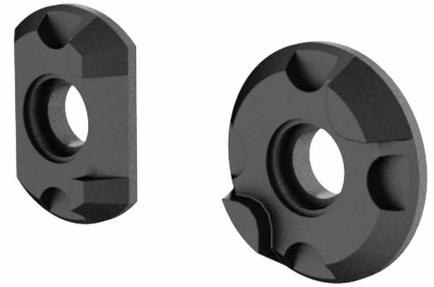
- Rosettes round and oblong.
- With and without stop.
- With or without latch recesses.

Material

- **Rosettes:** PA, black or steel, zinc plated
- **Sealing kits:** EPDM / NBR, black

Remarks

- u) latch recess
- v) stop



Rosettes

	Product number	Name	Version	Material	Surface	for handle	Delivery Unit
c1)	232-0401.00-00000	Rosette round	without stop	PA	black	a), a1), b), b1)	1 pc.
c2)	232-9141.00-00000	Rosette round with bearing plate	without stop, 2-part	steel	zinc plated	a), a1), b), b1)	1 pc.
c3)	232-0402.00-00000	Rosette oblong	without stop	PA	black	a), a1), b), b1)	1 pc.
c4)	232-0410.03-00000	Rosette round	stop 90°	PA	black	a), a1), b), b1)	1 pc.
c5)	232-0410.00-00001	Rosette round	stop 90°, 4 latches	PA	black	a2), a3)	1 pc.
c6)	232-0409.00-00000	Rosette oblong	stop 180°, 2 latches	PA	black	a2), a3)	1 pc.

Sealing kit

Product number	Name	Delivery Unit
232-8710.00-01401	Sealing kit for oblong rosettes	1 pc.
232-8710.00-01402	Sealing kit for round rosettes	1 pc.

