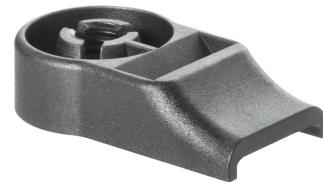


Cable Tie Mount

6-068



Advantages

- Cable tie mount for quick, tool-less assembly onto a M6 weld stud.
- Simple insertion of the cable tie through the upper insertion opening.
- Secure fit in any position on the weld stud.
- Can be removed by simply unscrewing counter clockwise.

Material

- **Cable tie mount:** PA, black

Remarks

Cable Tie Mount

Product number	Installation type	Delivery Unit
214-0111.51-00000	tool-less	250 pcs.

