

Swinghandle RS 105 for PHZ, handle status evaluable, RC2

MLE1101



Advantages

- Handle status can be evaluated.
- Tested according to security class RC2 DIN EN 1630. Only in combination with profile half cylinders according to DIN 18252.
- Mechanical emergency opening by key cylinder 30/10mm or 35/10mm.
- Vibration-proof according to DIN EN 61373.
- IP65 according to DIN EN 60529.
- Cylinder cover magnetically secured and can additionally be screwed down by M3x10, TX10 drive.
- RH / LH application.

Material

- **Swinghandle, dish, cover and cap:** zinc die, RAL 7038 or RAL 9005

Remarks

(S) Door-thickness max. 3mm

1. stroke 18mm
2. clearance

Further technical details please see data sheet

Profile half cylinders and their assembly must be ordered separately.

Swinghandle MLE1101

	Product number	Surface	Latching type	Installation type	Delivery Unit
a)	602-9009.00-07038	grey RAL 7038	Cylinder barrel	screw-on	1 pc.
a1)	602-9009.00-09005	black RAL 9005	Cylinder barrel	screw-on	1 pc.

Functionality/Activation

Mechanical opening option via profile cylinder.
Handle status (open/closed) can be evaluated.

Status query

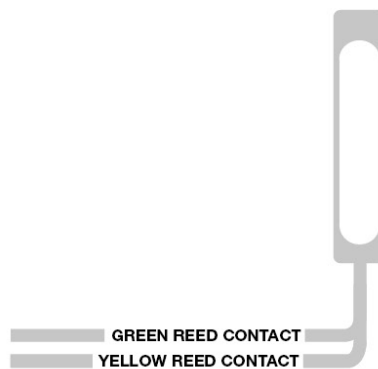
Handle status can be evaluated via integrated potential-free reed sensor

- Contact form: Normally open contact (when the handle is closed, the contact is closed)
- Switching voltage: max. 30V DC
- Transport current, switching current: max. 0.5A
- Sensor resistance: 280 mohm
- Working temperature: Cable will not be moved -30°C to 80°C; cable will be moved -5°C to 80°C

Technical data

- Features: IP65 according to DIN EN 60529:2014 (tightening torque 3-4 Nm); RC2 according to DIN EN 1630:2011-09; vibration-proof according to DIN EN 61373:2011
- Wall/sheet thickness: up to 3mm
- ROHS, REACH

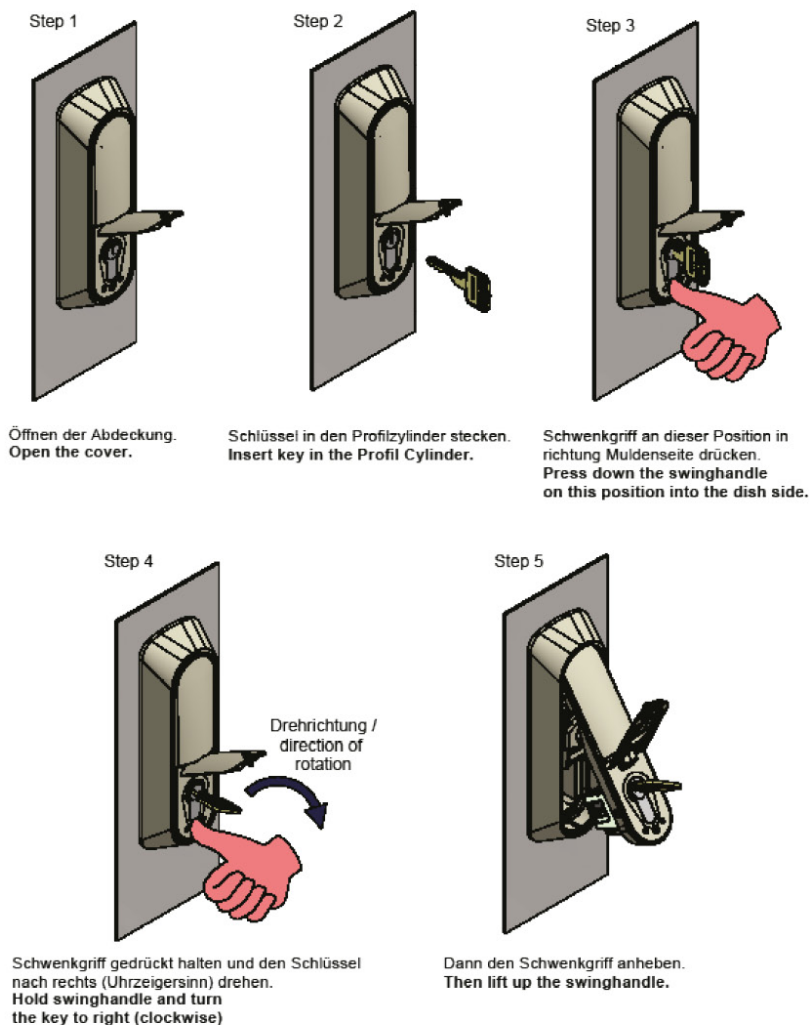
Wire designation



Connection line

- Length: 4m
- Ø 4.4mm² with 2 single wires Ø 0.25mm²

Opening Instructions



⚠ Attention: Risk of crushing and abrasion when pressing shut the swinghandle. Be careful not to injure yourself when closing the handle.

Liability clause for sales products

The above information and our technical application advice, whether verbal, in writing or by means of tests, are given to the best of our knowledge. However, this information shall be regarded as non-binding only, also with regard to any third-party property rights.

This information does not exempt you from conducting your own review of our current advisory suggestions. This applies in particular to the technical information on our products in terms of their suitability for use and application.

The application, use and processing of our products and the products manufactured by you on the basis of our technical application advice are beyond our control and are therefore exclusively your responsibility.

The sale of our products is subject to our current general terms and conditions of sale and delivery.

