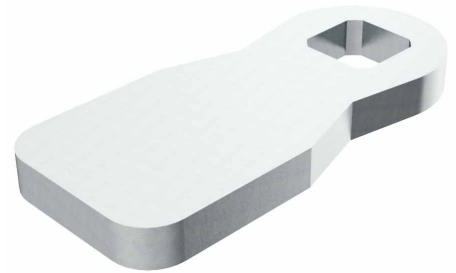


Cams L45 Steel, zinc plated

1-102.01

RoHS
WEEE

Advantages

- Cams without ramp and stop.
- **a)** = straight cam (XX)
- **(XX)** = housing length, measured from the upper edge of the panel to the upper edge of the cam.
- **b)** = negatively bent cam (upwards).
- **c)** = positively bent cam (downwards).

Material

- **Cams:** steel, zinc plated

Remarks

Attention: please note that a collision with the fixing nut of negatively bent cams installed in thick doors might be possible. The functionality has to be checked in the individual case.

Formula for H-dimension:

for negatively bent cams K will be subtracted from (XX),

for positively bent cams K will be added to (XX).

Cam, length 45mm, without stop

Product number	b) negatively bent K =	c) positively bent K =	Delivery Unit
100-0545.15-00022	22 mm	22 mm	1 pc.
100-0545.15-00020	20 mm	20 mm	1 pc.
100-0545.15-00018	18 mm	18 mm	1 pc.
100-0545.15-00016	16 mm	16 mm	1 pc.
100-0545.15-00014	14 mm	14 mm	1 pc.
100-0545.15-00012	12 mm	12 mm	1 pc.
100-0545.15-00010	10 mm	10 mm	1 pc.
100-0545.15-00008	8 mm	8 mm	1 pc.

Product number	b) negatively bent K =	c) positively bent K =	Delivery Unit
100-0545.15-00006	6 mm	6 mm	1 pc.
100-0545.15-00004	4 mm	4 mm	1 pc.
100-0545.15-00002	2 mm	2 mm	1 pc.
a) 100-0545.15-00000	0 mm	0 mm	1 pc.

