

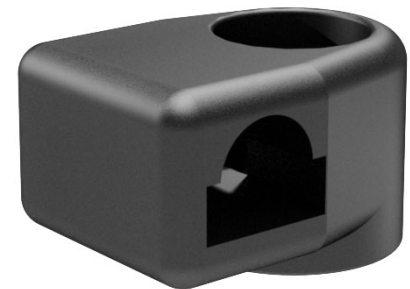
# Rod Guides RS

1-192



## Advantages

- Rod guides for 8mm round rods.
- Version a) adjustable in height to compensate production tolerances or if sealing has set.
- The rod guide can be adjusted in height by a slotted insert (max.12 x 2mm).
- With this rod guide even completely pre-assembled rod-latch systems can be installed, because the rod guide can be screwed onto the thread of the weld studs M6, by turning the threaded sleeve.
- The round shape of the hole allows free swivelling even with very short rods.



## Material

- **Rod guide:** PA, black
- **Adjusting Sleeve:** steel, zinc plated
- **Snap ring:** stainless steel

## Remarks

### Adjustment depending on the lenght of the weld stud:

M6 x 14 +5/-1mm,  
M6 x 16 +5/-3mm,  
M6 x 18 +5/-5mm,  
M6 x 20 +5/-7mm

Stainless steel version see product system 7-912.

## Rod guide

	Product number	Height adjustable	Adjustment range	Installation type	Delivery Unit
a)	200-9615.00-00000	Yes	max. + 5 mm	screw-on	1 pc.
b)	200-3606.03-00000			screw-on	1 pc.

