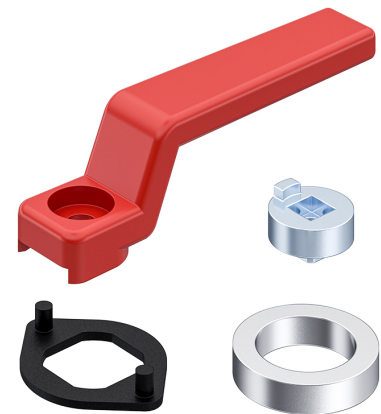


Emergency Handle + Anti-Rotation Device Pr20.1

1-275



Advantages

- Emergency handle for internal unlocking for quarter-turns of the Pr20.1. Installation is with the cam.
- Anti-rotation device for all quarter-turns Pr20.1 with nut fastening.
- Distance ring to raise the quarter-turn heads Pr20.1
- Serrated lock washer as protection against the connection unintentionally coming loose due to vibrations.
- Quarter-turn extension for extending quarter-turns by 6.5mm Pr20.1. Screwed on under the housing with the cam.

Material

- **Emergency handle:** zinc die, red
- **Anti-rotation device:** zinc die, zinc plated or black
- **Serrated lock washer:** steel, zinc plated or stainless steel
- **Spacer:** steel, black or chrome plated, or zinc die, chrome plated or black
- **Quarter-turn extension:** zinc die, zinc plated

Remarks

1. please note length of screw

Accessories Quarter-turn

	Product number	Type	Material	Surface	D	d	S	Delivery Unit
a)	200-4701.00-00000	Emergency handle	zinc die	red	-	-	-	10 pcs.
b)	200-4601.00-00000	Anti-rotation device	zinc die	zinc plated	-	-	-	10 pcs.
b)	200-4601.02-00000	Anti-rotation device	zinc die	black	-	-	-	10 pcs.
c)	800-0064.00-00000	Serrated lock washer	steel	zinc plated	-	-	-	10 pcs.
c)	840-6798.00-00023	Serrated lock washer	stainless steel	black	-	-	-	10 pcs.
d)	200-4608.00-00000	Spacer	steel	black	28 mm	21.9 mm	4 mm	10 pcs.

	Product number	Type	Material	Surface	D	d	S	Delivery Unit
d)	200-4610.00-00000	Spacer	steel	chrome plated	30 mm	21.9 mm	4 mm	10 pcs.
d)	200-4611.01-00000	Spacer	zinc die	chrome plated	32 mm	21.7 mm	6.6 mm	10 pcs.
d)	200-4611.02-00000	Spacer	zinc die	black	32 mm	21.7 mm	6.6 mm	10 pcs.
e)	200-2809.35-00000	Quarter-turn extension	zinc die	zinc plated	32 mm		6.5 mm	10 pcs.

