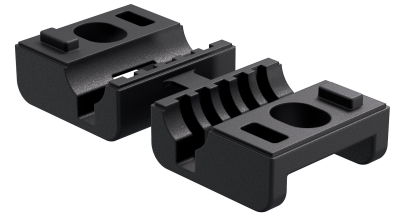
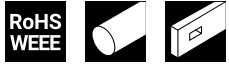


Dual Rod Guide FS/RS 18mm

3-904



Advantages

- For flat rods 14x3mm.
- For round rods 8mm.
- Divided in two parts.



Material

- **Rod guide:** PA, black

Remarks

For rod latch 1-351

Required space inside the bend 18mm

1. weld stud M6 x 18mm, nut DIN 439 M6, washer DIN 125 6,4

Rod guide FS/RS

Product number	Fastening type	Installation type	Delivery Unit
208-1528.54-00000	M6	screw-on	1 pc.

