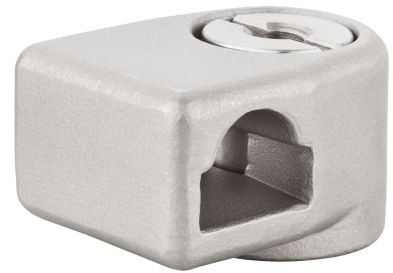


# Rod Guide RS, height adjustable Stainless Steel

7-912



## Advantages

- Rod guide with adjustable height for 8 mm round rods, to compensate production tolerances, or if sealing has set.
- Slotted insert (max.12 x 2 mm).

## Material

- **Rod guide:** AISI 316
- **Adjusting screw:** AISI 303
- **C-clip and wave washer:** stainless steel

## Remarks

### Adjustment depending on the length of the weld stud:

M6 x 14 +5/-1 mm,  
M6 x 16 +5/-3 mm,  
M6 x 18 +5/-5 mm,  
M6 x 20 +5/-7 mm

More information see product system 1-192.

## Rod guide

Product number	Height adjustable	Adjustment range	Installation type	Delivery Unit
200-9623.00-00000	Yes	max. + 5 mm	screw-on	1 pc.

