

# Rod Latch FS PrB

3-075



## Advantages

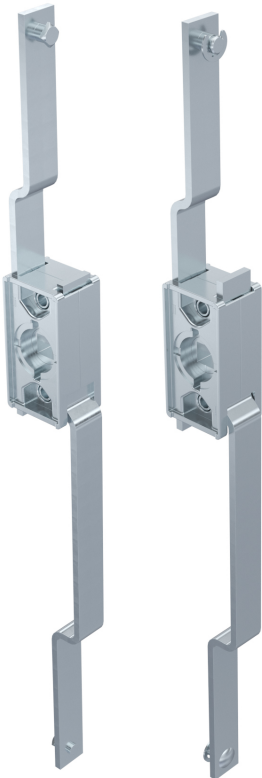
- For cutout B.
- For application within the sealed area.
- The latch can be combined with escutcheons or swinghandles.
- RH / LH application through double symmetry.
- Grounding by grounding clip (optional).

## Material

- **Housing:** zinc die, untreated
- **Pinion:** sintered metal
- **Rods:** steel, zinc plated

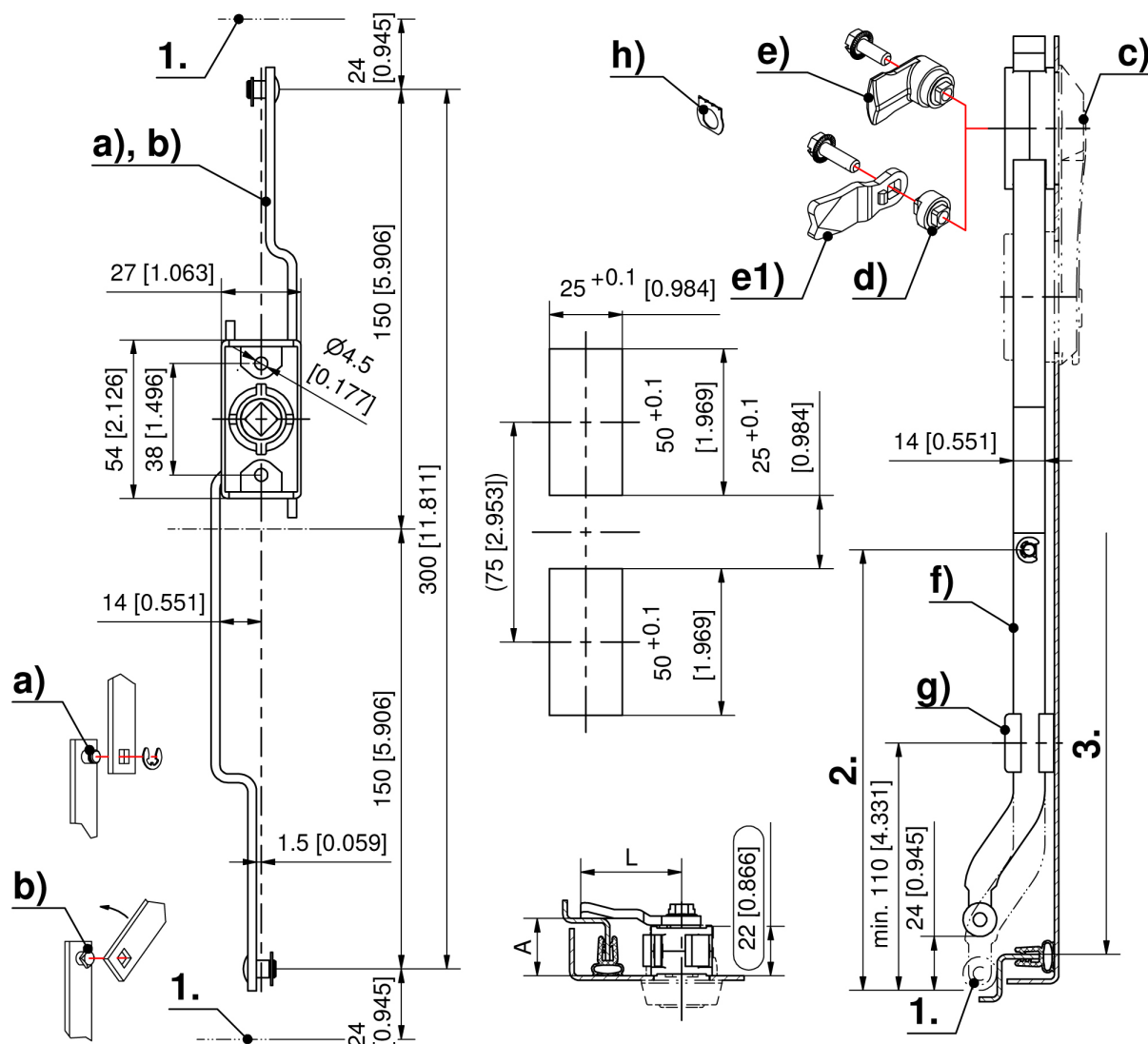
## Remarks

- 1. stroke 24mm
- 2. length L
- 3. clearance



## Rod latch

	Product number	Rod fastening	Installation type	Delivery Unit
a)	208-9021.00-00000	C-clip	screw-on	1 pc.
b)	208-9022.00-00000	quick-fit	screw-on	1 pc.



Formula for rods:  
cutout in the door center

$$L_{2.} = \frac{\text{clearance 3.} - 10\text{mm [0.394] (tolerance)} - \text{Rod Latch System in retraced condition } 300\text{mm [11.811]}}{2}$$