

Rod Latch RS PrB

3-132.01



Advantages

- For cutout B.
- For application within the sealed area.
- Can be equipped with escutcheon or swinghandel.
- RH / LH application through double symmetry.
- In this configuration both round rods have the same length.
- The 4 weld-studs for the rod guides are positioned exactly in the line with the center of the latch system.
- Grounding by grounding clip (optional).

Material

- **Rod latch:** zinc die, untreated / steel, zinc plated

Remarks

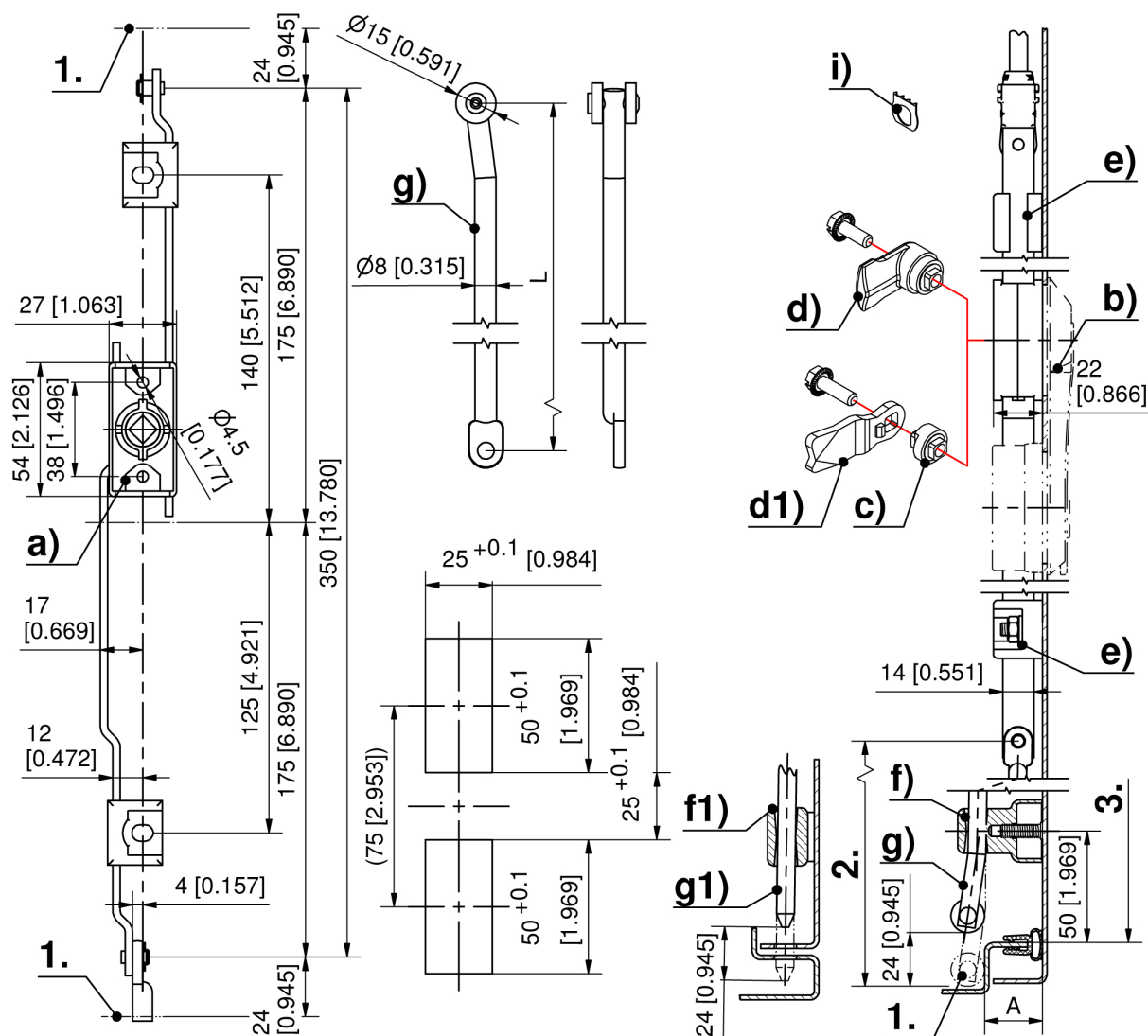
1. stroke 24mm
2. length L
3. clearance

Both flat rods of the rod latch have to be used with rod guides (e).



Rod latch

	Product number	Rod fastening	Installation type	Delivery Unit
a)	208-9016.00-00000	C-clip	screw-on	1 pc.



Formula for rods:
cutout in the door center

$$L_2 = \frac{\text{clearance 3.} - 10\text{mm [0.394] (tolerance) - Rod Latch System in retraced condition 350mm [13.780] + 24\text{mm [0.945]}}{2}$$