

# Rod Latch RS PrC

3-132.02



## Advantages

- For cutout C.
- Both flat rods of the rod latch have to be used with rod guides (e).
- In this configuration both round rods have the same length.
- The 4 weld-studs for the rod guides version e) and f) are positioned exactly in the line with the center of the latch.
- RH / LH application through double symmetry.
- Grounding by grounding clip (optional).

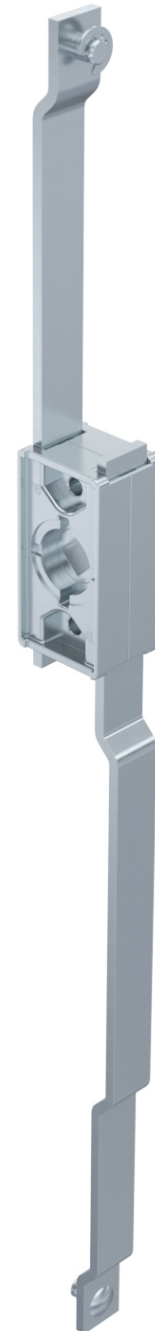
## Material

- **Rod latch:** zinc die, untreated / steel, zinc plated

## Remarks

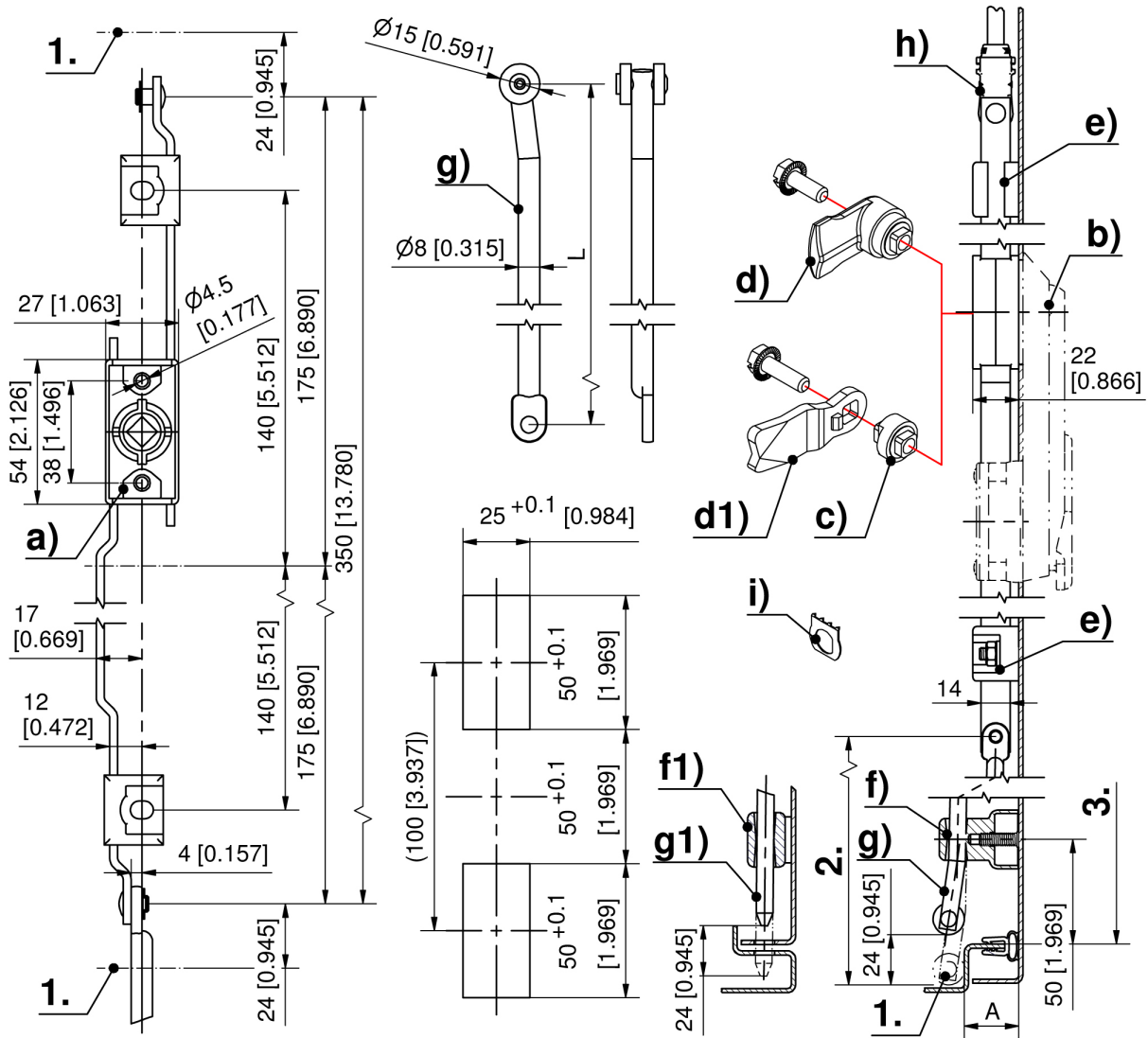
1. stroke 24mm
2. length L
3. clearance

Both flat rods of the rod latch have to be used with rod guides (e).



## Rod latch

	Product number	Rod fastening	Installation type	Delivery Unit
a)	208-9015.00-00000	C-clip	screw-on	1 pc.



Formula for rods:  
cutout in the door center

$$L_2 = \frac{\text{clearance } 3. - 10\text{mm [0.394] (tolerance) - Rod Latch System in retraced condition } 350\text{mm [13.780]}}{2}$$