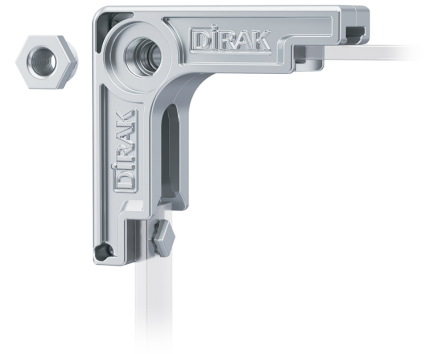


# 90° Redirect FS

3-166



## Advantages

- For multi-point locking system by corner.
- Suitable for flat rods 14x3mm.
- Quick assembly of the rods.
- RH / LH application.

## Material

- **Redirect:** zinc die, zinc plated
- **Sleeve nut:** steel, zinc plated
- **Spring plate:** AISI 304

## Remarks

1. stroke 24mm
2. fastening to locking pin M6. Sleeve nut included with delivery.

## Redirect

Product number	Installation type	Delivery Unit
208-9932.00-00000	screw-on	1 pc.

