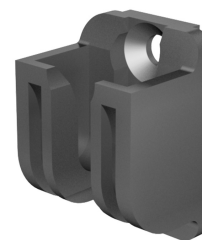


Dual Hook FS 23mm

3-912



Advantages

- Dual hook for flat rods with dual rollers.
- a) and b) IP65 according to DIN EN 60529 with flat external seal (optional).

Material

a)

- **Dual hook:** PA, black

b, c)

- **Dual hook:** zinc die, zinc plated

Remarks

Required space inside the bend 23mm

1. flat rod
2. dual rollers
3. stroke 24mm

Dual hook

	Product number	Version	Material	Surface	Installation type	Delivery Unit
a)	208-1446.50-00000	with countersunk holes for M5	PA	black	screw-on	1 pc.
b)	208-1402.00-00000	with countersunk holes for M6	zinc die	zinc plated	screw-on	1 pc.
c)	208-1401.00-00000	with thread and threaded stubs for M6	zinc die	zinc plated	screw-on	1 pc.

