

Rod Latch FS PrC Stainless Steel

7-040



Advantages

- For cutout C.
- For application within the sealed area.
- The latch can be used with escutcheon, handles or swinghandle.
- Fire protection tested with E60 classification according to DIN EN 45545-3.
- Grounding by grounding clip (optional).
- RH / LH application through double symmetry.

Material

- **Housing:** AISI 316
- **Rods:** AISI 304

Remarks

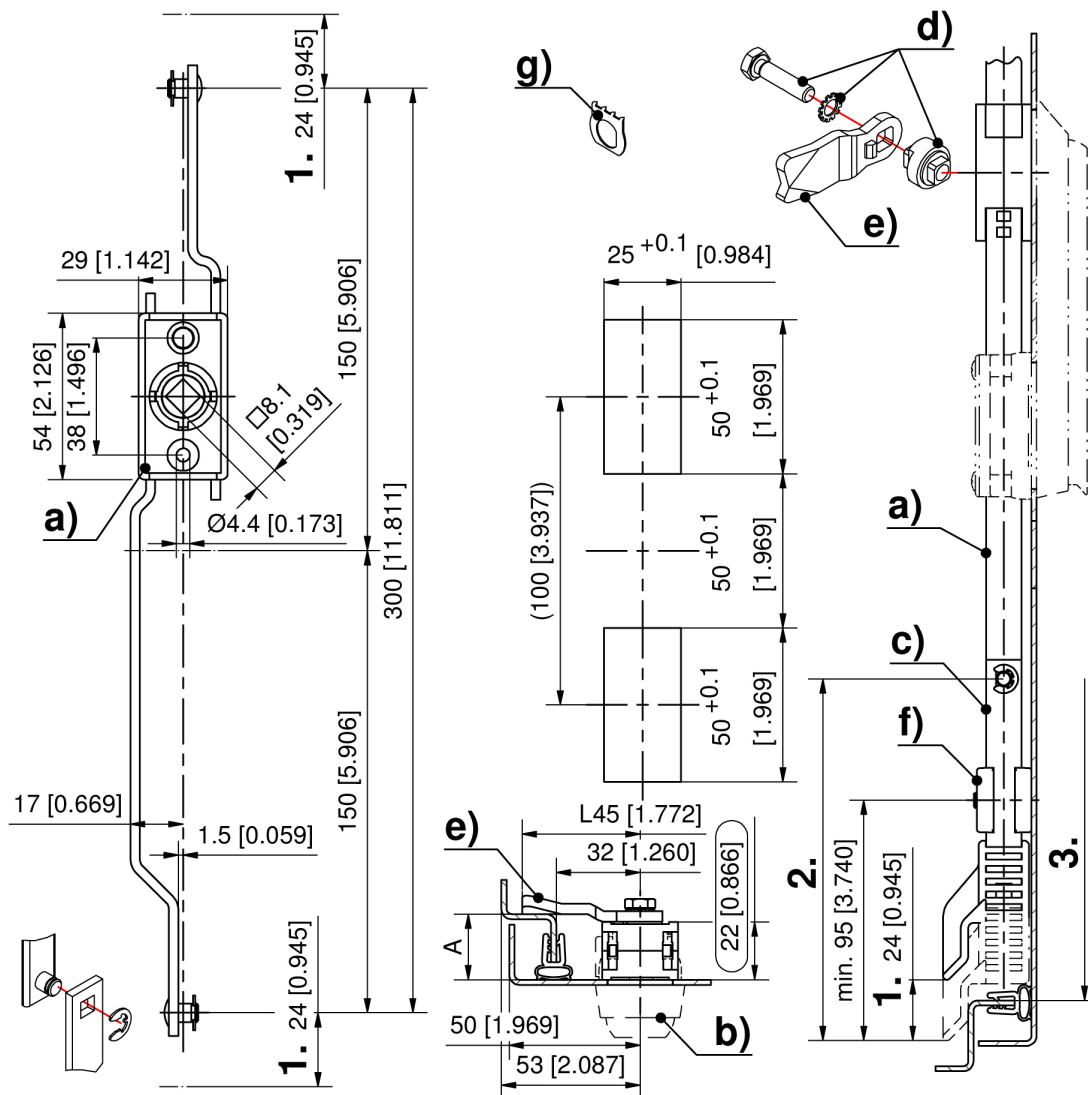
1. stroke 24mm
2. length L
3. clearance





Rod latch

	Product number	Rod fastening	Installation type	Delivery Unit
a)	208-9024.00-00000	C-clip	screw-on	1 pc.



Formula for flat rods:
cutout in the door center

$$L \text{ 2.} = \frac{3 \cdot \text{clearance of the cabinet} - 10\text{mm}[0.394] \text{ (tolerance)} - \text{rod latch system } 300\text{mm} [11.811]}{2[0.079]}$$