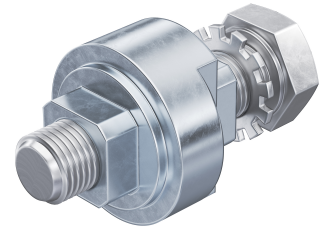


Cam Adapter Stainless Steel

7-041



Advantages

- Cam adapter for rod latch systems.
- Suitable for product systems 7-030 and 7-040.

Material

Cam adapter: AISI 316

Remarks

1. rod latch
2. escutcheon / swinghandle

Cam adapter

Product number	Name	Delivery Unit
208-9406.00-00000	Cam adapter with hex. head screw M6x25 + serrated lock washer	1 pc.

