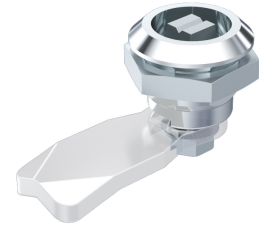


Quarter-Turn with Conical Square Insert Pr20.1 L18

1-210



Advantages

- IP65 according to DIN EN 60529 by sealing kit (optional).
- RH / LH application.
- On request parts can be assembled by DIRAK.
- A pre-assembled quarter-turn can be installed in the cutout.

Material

- **Housing:** zinc die, chrome plated or black
- **Nut:** steel, zinc plated
- **Insert:** steel, zinc plated, or zinc die, chrome plated

Remarks

(S) Door-thickness max. 8mm

Please configure the quarter-turn with insert and cam.

On request parts can be assembled by DIRAK.

Quarter-Turn housing, zinc die

	Product number	Surface	Housing length	Installation type	Delivery Unit
a)	200-9065.00-00000	chrome plated	18 mm	screw-on	10 pcs.
a)	200-9086.00-00000	black	18 mm	screw-on	10 pcs.

Betätigung

	Product number	Insert	Material	Surface	Delivery Unit
b)	200-9138.00-00000	Conical square 9mm	zinc die	chrome plated	10 pcs.
b)	200-9175.00-00000	Conical square 9mm	steel	zinc plated	10 pcs.



	Product number	Insert	Material	Surface	Delivery Unit
b)	200-9183.00-00000	Conical square 9mm	steel	chrome plated	10 pcs.

