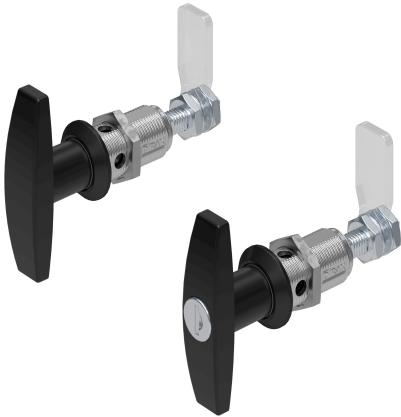


Compression Latch with T-handle Pr20.1 L42

1-157



Advantages

- Compression 6mm.
- Vibration-proof.
- IP65 according to DIN EN 60529.
- Grounding by single sided grounding nut.
- The H-dimension can be varied via the cranking of the cams.
- The cam can be varied via the nuts on the square threaded rod.
- Handle element is delivered with two keys.

Material

- **Housing, T-handle:** zinc die, black powder-coated
- **Square threaded rod, nut, serrated washer:** steel, zinc plated
- **Grounding nut:** zinc die, untreated
- **Key cylinder with excenter:** zinc die, untreated

Remarks

(S) Door-thickness max. 32mm

Please configure the quarter-turn with insert and cam.

Negatively cranked cams cannot be installed pre-assembled.

1. stroke 6mm

Compression Latch with T-handle Pr20.1 L42

	Product number	Version	Latching type	Installation type	Delivery Unit
a)	248-9376.00-00000	RH version	without lock	screw-on	1 pc.
b)	248-9377.00-00000	RH version	keyed alike DIRAK 1333	screw-on	1 pc.

