

Inserts for Quarter-Turns 1-083

1-083.900



Advantages

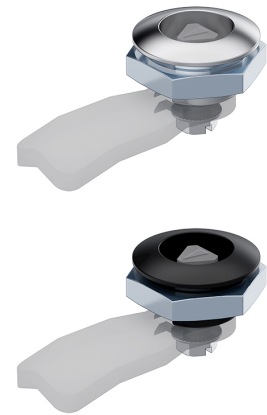
- Inserts for housing length 12mm.

Material

Inserts: zinc die, chrome plated or black

Remarks

drawings see product system 1-083



Inserts, zinc die, for quarter-turn L12

	Product number	Insert	Surface	Delivery Unit
b)	100-9138.00-00006	Double bit 3mm pin	chrome plated	10 pcs.
b1)	100-9138.00-00007	Double bit 5mm pin	chrome plated	10 pcs.
c)	100-9138.00-00008	Square 6mm	chrome plated	10 pcs.
c1)	100-9138.00-00009	Square 7mm	chrome plated	10 pcs.
c2)	100-9138.00-00010	Square 8mm	chrome plated	10 pcs.
d)	100-9138.00-00011	Triangular 7mm	chrome plated	10 pcs.
d1)	100-9138.00-00012	Triangular 8mm	chrome plated	10 pcs.
e)	100-9138.00-00013	Slotted 2x4mm	chrome plated	10 pcs.
b)	100-9140.00-00006	Double bit 3mm pin	black	10 pcs.
b1)	100-9140.00-00007	Double bit 5mm pin	black	10 pcs.
c)	100-9140.00-00008	Square 6mm	black	10 pcs.
c1)	100-9140.00-00009	Square 7mm	black	10 pcs.
c2)	100-9140.00-00010	Square 8mm	black	10 pcs.
d)	100-9140.00-00011	Triangular 7mm	black	10 pcs.
d1)	100-9140.00-00012	Triangular 8mm	black	10 pcs.
e)	100-9140.00-00013	Slotted 2x4mm	black	10 pcs.

